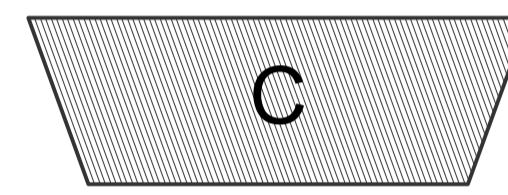
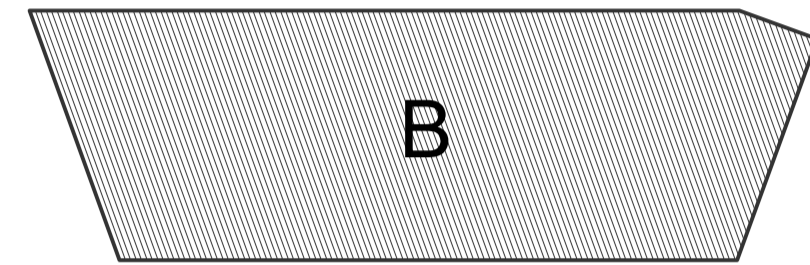
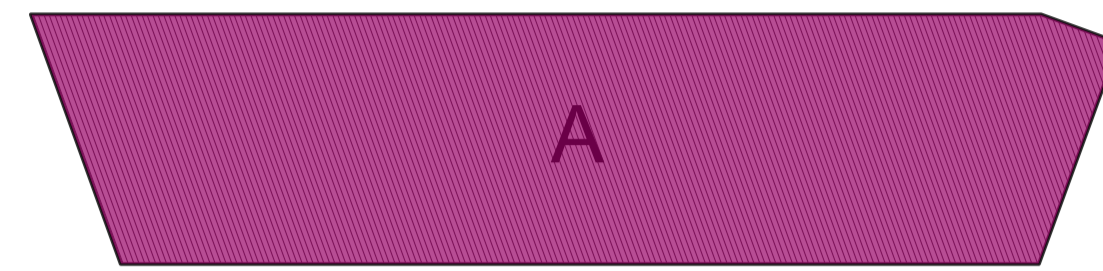


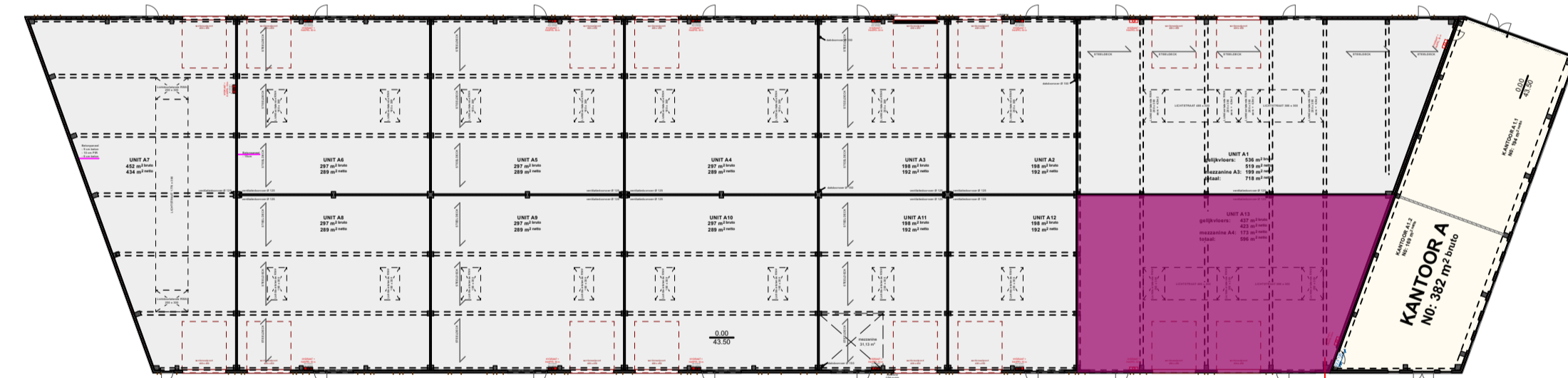
# LCV Real Estate - Sint-Truiden - Verkoopplan Unit A13

# A13

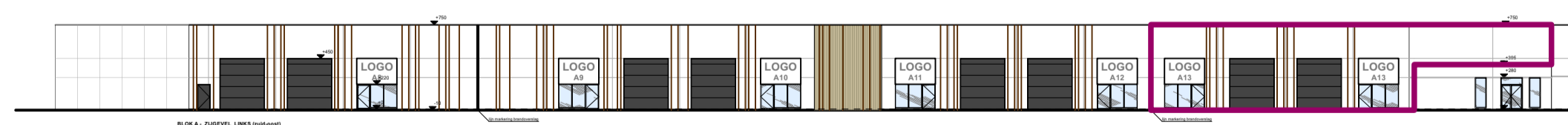
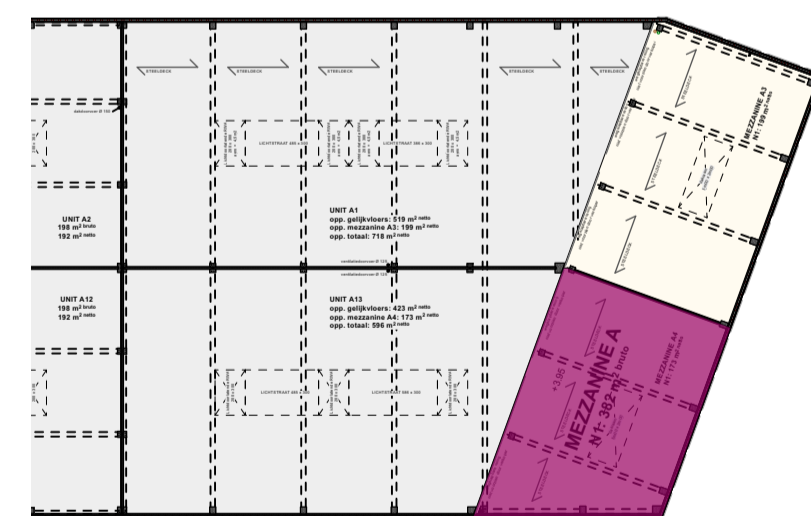
Bruto opp:  
297 m<sup>2</sup>



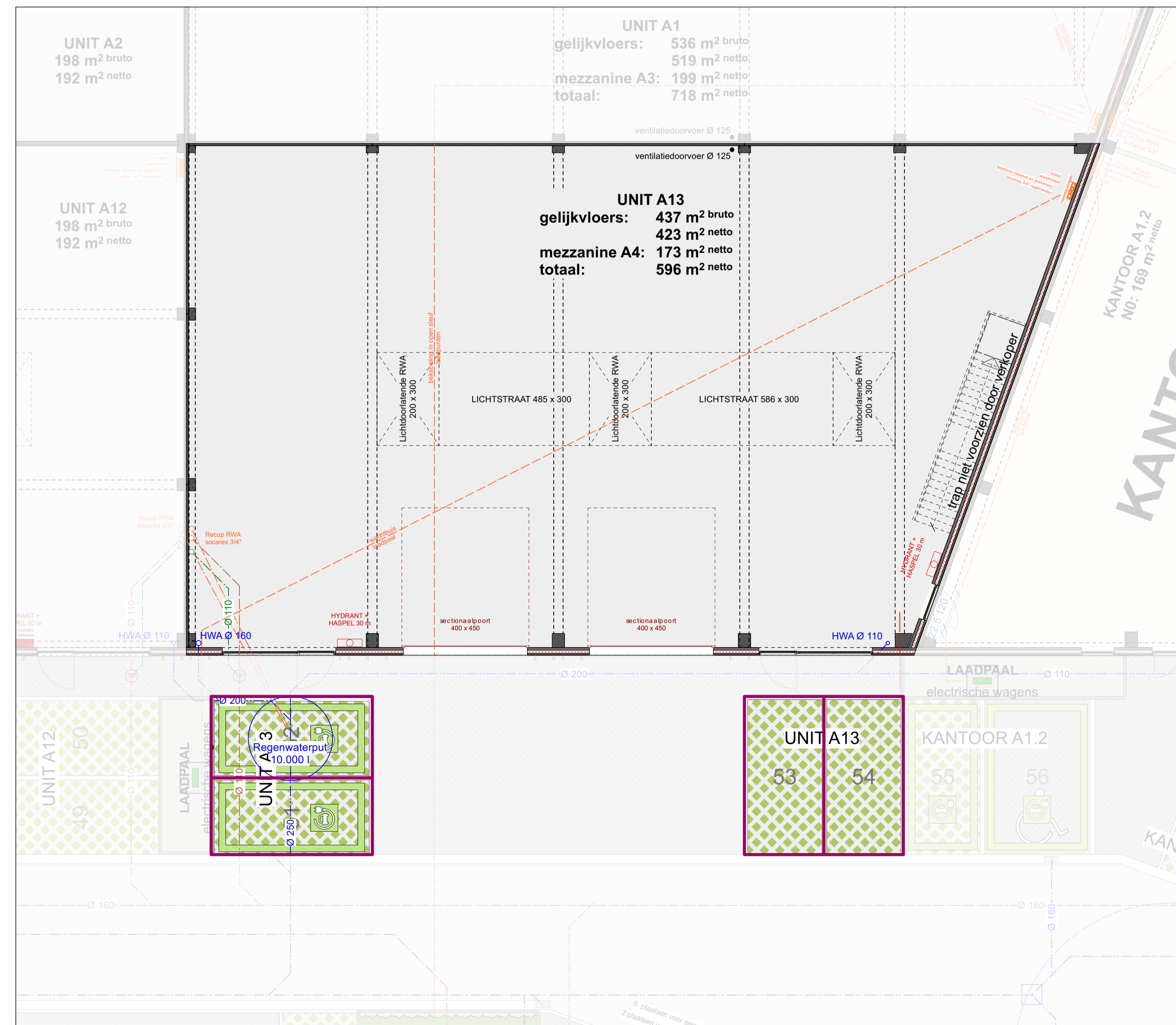
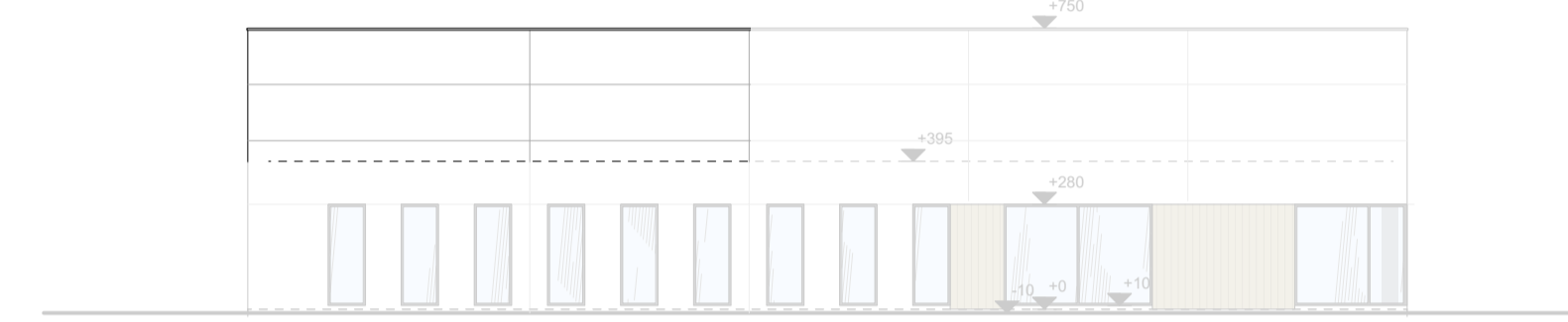
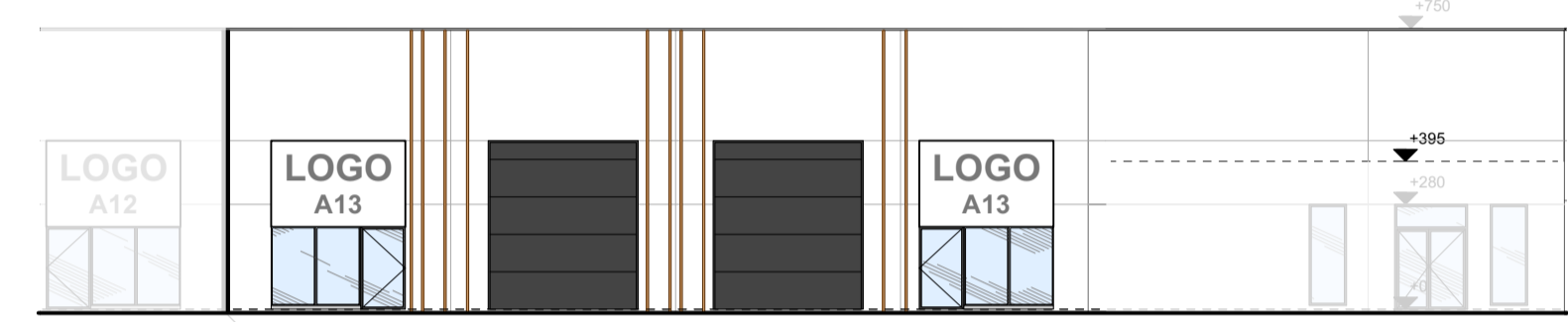
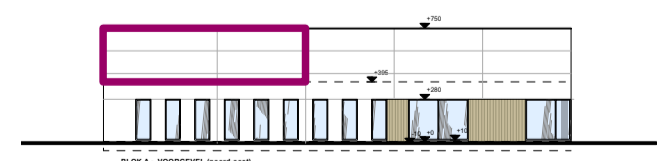
SITUERING



INPLANTING



GEVELS



DOSSIERNUMMER  
**21.4389**  
UITVOERING

BOUWHEER  
LCV Real Estate  
Koude 3  
B - 9790 - Wortegem-Petegem  
Tel: 056 69 41 11

BOUWPLAATS  
Terbest 90,  
B-3800 SINT-TRUIDEN

KADASTER  
afdeling: 2  
sectie: D  
n<sup>o</sup>: 198x2

PROJECT  
BOUW VAN EEN  
MEZZANINE  
MET KMO-UNITS  
VOORWERP  
VERKOOPPLAN - UNIT A13

Revisie:  
 \* = ontwerp  
 + = ontwerp  
 - = ontwerp  
 = = ontwerp  
 = = ontwerp  
 = = ontwerp

Architect:  
S. MERTENS  
architectuurvoerder

A. CROON  
zaakvoerder

Formaat:  
16/18,39

Schaal:  
1/50

Datum:  
07/03/2022

Pagina n<sup>o</sup>:  
A13

Project manager:  
AL

Getekend door:  
AL

VERKOOPPLAN - UNIT A13  
VK\_BLOK A\_UNIT A13